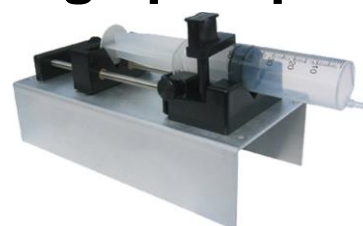
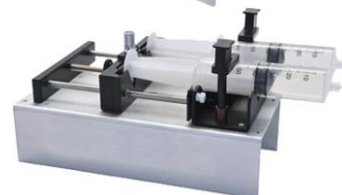


PSNE500/PSNE4500 OEM syringe pumps

PSNE500 – OEM syringe pump
 PSNE501 – OEM syringe pump with stall detection
 PSNE510 – High pressure OEM syringe pump
 PSNE511 – High pressure OEM syringe pump with stall detection



PSNE4500 – Double OEM syringe pump
 PSNE4501 – Double OEM syringe pump with stall detection



Features:

- Computer controllable: networkable up to 100 pumps
- Stand-alone operation: pre-program the pump with a dispensing program, then operate the pump from an attached Foot Switch, button, or I/O controller
- Add the OEM Starter Kit to run as a fully functional, stand-alone pump.
- Designed for OEM applications, this pump has the same mechanisms and electronics as the PSNE1000 aside from the front panel controls.
- Operates from a computer or a foot switch
- Infusion and withdrawal
- Set a single pumping rate and/or dispensing volume
- Program up to 41 pumping phases that change pumping rates, set dispensing volumes, insert pauses, control and respond to external signals, sound the buzzer
- Network, control, and monitor up to 100 pumps with one computer
- Dispensing accuracy of $\pm 1\%$

OEM Syringe pump accessories

OEM starter & Net Kits

Model: PSOEM-STARTER



- Allows user to interactively communicate to the pump with a computer
- Includes: power supply, Pump-to-PC network cable and user manual

Foot switch

Model: PSADPT-FOOTSW-2



- Start, stop, or send a signal to a pumping program
- Attach to any of the PSNE1000 family pumps to allow remote operation
- Utilizes the TTL logic port on the pump
- Quick and simple setup

Model: PSOEM-NET



Power supply and secondary cable only. For use when networking two or more OEM PSNE500 syringe pumps together. Must use the secondary cable in order to complete this application.

Cost effective, easy to use, fully programmable fluid handlers
 Visit our website for our full range of syringe pumps and accessories

www.syringepump.nl

Specifications

Mechanical & electrical

	PSNE500 & PSNE501	PSNE510, PSNE511, PSNE4500 PSNE4501
Syringe sizes:	Up to 60 mL (140 mL partially filled)	Up to 60 mL (140 mL partially filled)
Number of syringes:	1	1 (PSNE4500/1 – 2 syringes)
Motor type:	Step motor	Step motor
Motor steps per revolution:	400	200
Motor to drive screw ratio:	15/28	15/28
Micro-stepping	1/8 to 1/2 depending on motor speed	1/8 to 1/2 depending on motor speed
Drive screw pitch:	20 revolutions/inch	20 revolutions/inch
DC connector:	2.1 mm, center positive	2.5 mm, center positive
Voltage at DC connector:	12V DC at full load	12V DC at full load
Amperage:	750 mA at full load	1000 mA at full load
Power supply type:	Unregulated linear external wall adapter, country and power source specific	Unregulated linear external wall adapter, country and power source specific
Power supply output rating:	12V DC @ 1000 mA	12V DC @ 1000 mA
Dimensions:	24.13 cm x 10.8 cm x 10.5 cm	22.86 cm x 14.605 cm x 11.43 cm
Weight:	1.00 kg	1.63 kg

Operational

	PSNE500 & PSNE501	PSNE510, PSNE511, PSNE4500 PSNE4501
Maximum speed	5.1005 cm/min	18.36964 cm/min
Minimum speed	0.004205 cm/hr	0.008409 cm/hr
Maximum pumping rate	1699 mL/hr with a B-D 60 mL syringe	6120 ml/hr with a B-D 60 mL syringe
Minimum pumping rate	0.73 µL/hr with a B-D 1 mL syringe	1.459 µl/hr with a B-D 1 mL syringe
Maximum force	45 lbs. at minimum speed, 18 lbs. at maximum speed	100 lbs. at minimum speed, 18 lbs. at maximum speed
Number of program phases	41	41
RS-232 pump network	100 pumps maximum	100 pumps maximum
PS-232 selectable baud rates	300, 1200, 2400, 9600, 19200	300, 1200, 2400, 9600, 19200
Syringe inside diameter range:	0.100 to 50.00 mm	0.100 to 50.00 mm

Custom Applications

For specialized and OEM applications, contact us!

Custom modifications can be made to the mechanics and/or the firmware.

Cost effective, easy to use, fully programmable fluid handlers
Visit our website for our full range of syringe pumps and accessories

www.syringepump.nl

PSNE500 & PSNE501 Programmable OEM single syringe pumps

Syringe manufacturer	Syringe (mL)	Inside diameter (mm)	Maximum rate (mL/hr)	Minimum rate (µL/hr)	Maximum rate (mL/min)
B-D	1	4.699	53.07	0.73	0.884
	3	8.585	177.1	2.434	2.952
	5	11.99	345.5	4.748	5.758
	10	14.43	500.4	6.876	8.341
	20	19.05	872.2	11.99	14.53
	30	21.59	1120	15.4	18.67
	60	26.59	1699	23.35	28.32
HSW Norm-Ject	1	4.69	52.86	0.727	0.881
	3	9.65	223.8	3.076	3.73
	5	12.45	372.5	5.116	6.209
	10	15.9	607.6	8.349	10.12
	20	20.05	966.2	13.28	16.1
	30	22.9	1260	17.32	21
	50	29.2	2049	28.16	34.15
Monoject	1	5.74	79.18	1.088	1.319
	3	8.941	192.1	2.64	3.202
	6	12.7	387.6	5.326	6.46
	12	15.72	593.9	8.161	9.899
	20	20.12	972.9	13.37	16.21
	35	23.52	1329	18.27	22.15
	60	26.64	1705	23.44	28.42
	140	38	3470	47.69	57.84
Terumo	1	4.7	53.09	0.73	0.884
	3	8.95	192.5	2.646	3.208
	5	13	406.1	5.581	6.769
	10	15.8	600	8.244	10
	20	20.15	975.8	13.41	16.26
	30	23.1	1282	17.63	21.37
	60	29.7	2120	29.13	35.33
Poulsen & Graf (Glass)	1	6.7	107.8	1.483	1.798
	2	8.91	190.8	2.622	3.18
	3	9.06	197.2	2.711	3.288
	5	11.75	331.8	4.559	5.53
	10	14.67	517.2	7.107	8.62
	20	19.62	925.2	12.72	15.42
	30	22.69	1237	17.01	20.62
	50	26.96	1746	24.01	29.11
Steel Syringes	1	9.538	218.6	3.005	3.644
	3	9.538	218.6	3.005	3.644
	5	12.7	387.6	5.326	6.46
	8	9.538	218.7	3.005	3.644
	20	19.13	879.5	12.09	14.65
	50	28.6	1965	27.01	32.76
SGE (Gas tight)	0.25	2.303	12.74	0.176	0.212
	0.5	3.257	25.49	0.351	0.425
	1	4.606	50.99	0.701	0.85
	2.5	7.284	127.5	1.752	2.125
	5	10.3	254.9	3.504	4.248
	10	14.57	510.2	7.01	8.503
	25	23.03	1274	17.52	21.23
	50	27.5	1817	24.98	30.28
	100	34.99	2942	40.43	49.03

Cost effective, easy to use, fully programmable fluid handlers
 Visit our website for our full range of syringe pumps and accessories

www.syringepump.nl

PSNE510, PSNE511, PSNE4500 & PSNE4501 Programmable OEM single syringe pump

Syringe manufacturer	Syringe (mL)	Inside diameter (mm)	Maximum rate (mL/hr)	Minimum rate (µL/hr)	Maximum rate (mL/min)
B-D	1	4.699	188.1	1.436	3.135
	3	8.585	627.9	4.791	10.46
	5	11.99	1224	9.345	20.41
	10	14.43	1774	13.54	29.56
	20	19.05	3091	23.59	51.53
	30	21.59	3971	30.3	66.19
	60	26.59	6023	45.96	100.3
HSW Norm-Ject	1	4.69	187.4	1.43	3.123
	3	9.65	793.4	6.054	13.22
	5	12.45	1320	10.08	22.01
	10	15.9	2153	16.44	35.89
	20	20.05	3425	26.14	57.08
	30	22.9	4468	34.09	74.46
Monoject	1	5.74	280.7	2.142	4.678
	3	8.941	681.1	5.197	11.35
	6	12.7	1374	10.49	22.9
	12	15.72	2105	16.07	35.09
	20	20.12	3449	26.32	57.48
	35	23.52	4713	35.96	78.55
	60	26.64	6046	46.14	100.7
	140	38	9999	93.87	205
Terumo	1	4.7	188.2	1.436	3.136
	3	8.95	682.4	5.207	11.37
	5	13	1439	10.99	23.99
	10	15.8	2126	16.23	35.44
	20	20.15	3459	26.4	57.65
	30	23.1	4546	34.69	75.77
	60	29.7	7515	57.34	125.2
Poulsen & Graf (Glass)	1	6.7	382.4	2.919	6.374
	2	8.91	676.3	5.161	11.27
	3	9.06	699.3	5.336	11.65
	5	11.75	1176	8.975	19.6
	10	14.67	1833	13.99	30.56
	20	19.62	3279	25.03	54.66
	30	22.69	4386	33.47	73.1
	50	26.96	6192	47.25	103.2
Steel Syringes	1	9.538	775.1	5.914	12.91
	3	9.538	775.1	5.914	12.91
	5	12.7	1374	10.49	22.9
	8	9.538	775.1	5.914	12.91
	20	19.13	3118	23.79	51.96
	50	28.6	6969	53.18	116.1
SGE (Gas tight)	0.25	2.303	45.18	0.345	0.753
	0.5	3.257	90.38	0.69	1.506
	1	4.606	180.7	1.38	3.012
	2.5	7.284	452	3.449	7.533
	5	10.3	903.9	6.897	15.07
	10	14.57	1808	13.8	30.13
	25	23.03	4518	34.48	75.3
	50	27.5	6443	49.16	107.4
	100	34.99	9999	79.59	

Cost effective, easy to use, fully programmable fluid handlers
 Visit our website for our full range of syringe pumps and accessories

www.syringepump.nl